

It's time -
to slash power bills



It's time -
to control your
lifestyle at a touch



It's time -
to help save the
planet



Building or Renovating?

DON'T MISS OUT

It's time - to live in a 21st century home

You can have:

- User friendly home automation
- An affordable lifestyle of comfort and ease
- Big power savings

All at a touch!



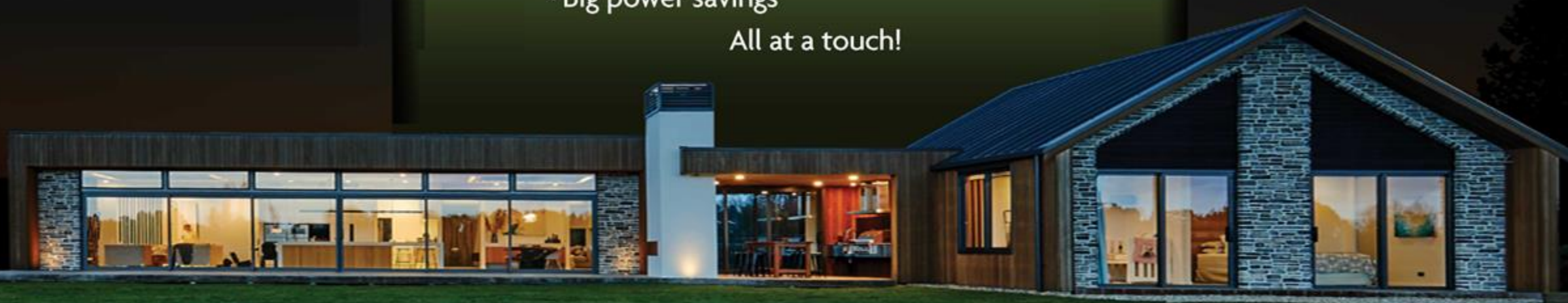
It's time -
for a lifestyle of
comfort and luxury



It's time -
for an affordable
smart home



It's time -
to get a real return
on your investment



Ata Touch History

It was all about energy saving
and return on investment

TCS (NZ) Ltd is an industrial automation company with over 30 years of developing advanced control solutions for industries. It specialises in leading-edge microprocessor control philosophies, which are used throughout the world.

In 2008 Peter and Jain Tait looked at building their new home. They went on a quest to find the latest technologies available in energy efficiency and home automation, only to discover that the technology on offer was outdated, expensive, and not well focused on energy savings. These findings lead them to develop their own Energy Efficient Smart Home system.

So began Ata Touch® the holistic solution, with its unprecedented power savings and automation integration to a vast array of the home functions and activities. The focus is not only on energy management but also on ease of use, simplicity of installation, and a solid return on investment.

This brochure guides you through the innovative world of Ata Touch®; what the technology can do and how it can be tailored to meet your lifestyle, budget, and desires.



Scan the QR code to watch an informative video or visit:
www.atatouch.co.nz/video/



Benefits & Features

Have it all or just the things you want.



Significant power savings to be made



Affordable lifestyle of comfort and ease



User friendly smart control



Fully integrated smart solution



Keep your home and family safe and secure



Future proof your investment

**Up to
66% off
water
heating**



**Domestic
Hot water**



**Spa
Heating**



**Pool
Heating**

**Up to
60% off
climate
control**



**Heating
&
Cooling**



**Underfloor
Heating**



**Zone
Control**

**Control
anything
from
anywhere**



**Windows,
Blinds,
Curtains**



Lighting



**Garage
Doors
Gates
Gas Fires**



**Intruder
Alerts**



**Smoke
& Fire
Alerts**



**Away
Mode
Simulation**

**Safety in
and
around
the home**

Heating / Cooling and Hot Water

Up to 66% savings on water heating alone.



One heat pump for heating, cooling and water heating



Optimises water heating based on your usage and heats up water twice as fast as an electric element



Multi-room ducted, with room-by-room temperature controls



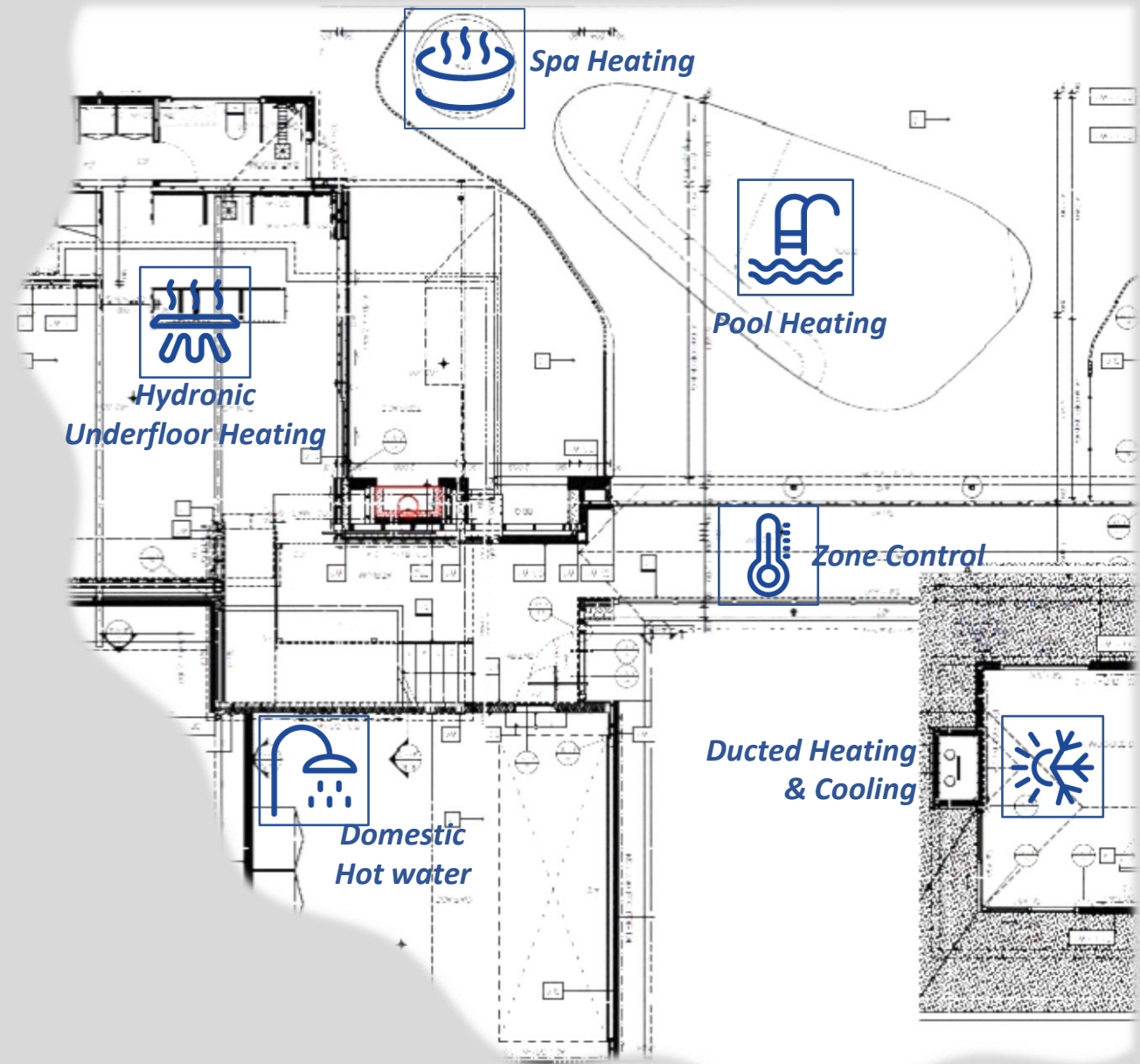
Multi-zone underfloor hydronic heating



Hot water for domestic hot water (DHW), spas and pools



Scheduled operation for lifestyle, night, and away modes for comfort and savings



User Friendly Control

Simply at-a-touch



Touch screen controller is the main brain



Graphical icon navigation for easy use



Remote control from your smart phone



Touch switch operation throughout the home



Tactile switches for response and feel



Fully configurable to better manage power usage

Touch Screen Controller (TSC)

Peter & Jains Hut < | > | 03:46 PM



Climate



Hot Water



Light Moods



Lighting



Fire



Control



Slide Show



Alarm



Clock



Setup



Living Off



Guest Off



A

Touch Switch



iUltra
Tactile Switch



Lighting and Ambience

Elegant lighting control at your fingertips



24VDC and 230VAC LED lighting control



Ultra-Thin Downlights – wide spread of light, and no interruption in your ceiling insulation



Passageway and strip lighting



Vintage LED bulbs for your feature fittings



Outdoor security and pathway lighting



Ata Touch LED lights save up to 90% on power compared to traditional incandescent lighting



24VDC Ultra-Thin LED Light



24VDC Vintage Bulb



Strip Lighting

Lighting and Ambience

Elegant lighting control at your fingertips



Motion activated lights to fit your lifestyle including dimming and zone control



Security and smoke escape modes



Mood control for ambience to fit the occasion



Night and simulation lighting (away mode)



Run on extra low voltage for increased reliability and safety. Significantly reduces power wastages



Touch Switches provide multi-functional touch control for all your lighting needs.



Simple but smart and all on one easy platform.

Simple but smart and all on one easy platform.



Garage doors and automated gates



Blinds, windows, curtains and gas fires



Pool covers, watering systems, and much more



Intrusion, smoke, and fire monitoring



Towel rails, demisters, fans, under tile heating



Devices can be easily added as you go along



Ata Touch Configuration Builder (ACB)

Awesome technology doing extraordinary things



We place the drivers, devices, and switches on your plan



Connect the device zones to the closest driver



Then select a control and ctrl click to what you want



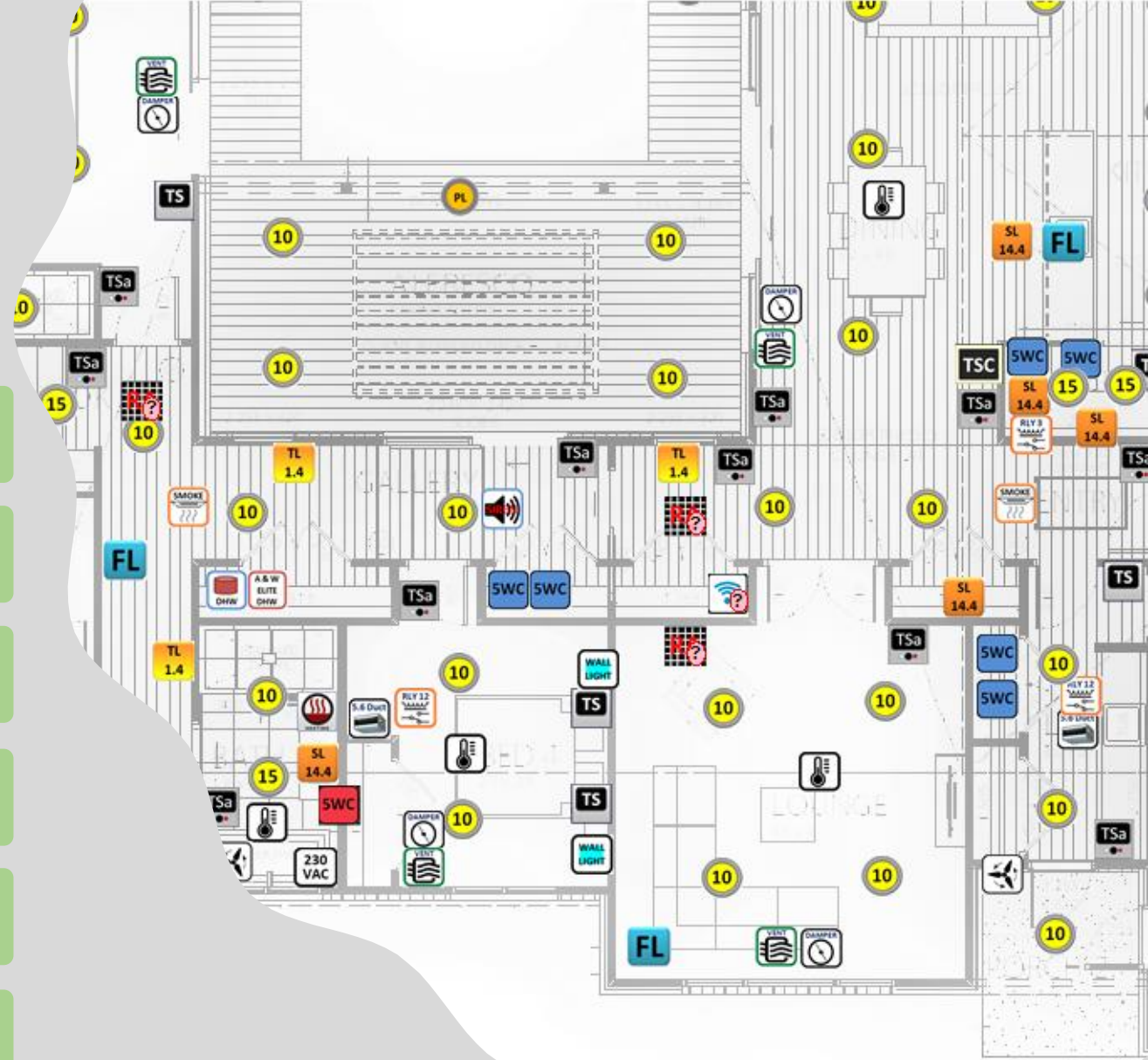
Select the features you want from the device properties



Then simply deploy to the touch screen controller



Quick and flexible and can be reconfigured with ease



Running Cost Estimates

based on averages



Comparing with the national statistics



Using national grid electricity only



Based on standard building practices



Compare occupancy levels to measure



Compare house sizing and windows



Ata Touch is by far the best

		Average 3 to 4 bedroom House					
House Size	Number of People	All Electric House		SPA Pool		Total KWH	Cost
		KWH / Day	KWH / Year	KWH / Day	KWH / Year		
120m ²		12.3	4,452.60	12.20	4,416.40	8,869.00	\$ 2,217.25
150m ²		15.4	5,574.80	13.42	4,858.04	10,432.84	\$ 2,608.21
180m ²		18.4	6,660.80	14.76	5,343.84	12,004.64	\$ 3,001.16
200m ²		21.5	7,783.00	16.24	5,878.23	13,661.23	\$ 3,415.31
220m ²		24.5	8,869.00	17.86	6,466.05	15,335.05	\$ 3,833.76
240m ²		27.6	9,991.20	19.65	7,112.66	17,103.86	\$ 4,275.96

		Ata Touch Air and Water					
House Size	Number of People	All Electric House		SPA Pool		Total KWH	Cost
		KWH / Day	KWH / Year	KWH / Day	KWH / Year		
120m ²		4.674	1,691.99	3.66	1,324.92	3,016.91	\$ 754.23
150m ²		5.852	2,118.42	4.03	1,457.41	3,575.84	\$ 893.96
180m ²		6.992	2,531.10	4.43	1,603.15	4,134.26	\$ 1,033.56
200m ²		8.17	2,957.54	4.87	1,763.47	4,721.01	\$ 1,180.25
220m ²		9.31	3,370.22	5.36	1,939.82	5,310.04	\$ 1,327.51
240m ²		10.488	3,796.66	5.89	2,133.80	5,930.45	\$ 1,482.61

Case study

Hamilton installation



This elegant Silver Award winner in the 2019 Registered Master Builders House of the Year competition is home to a family of four adults and two children and has Ata Touch intuitive energy saving technology that gives customised comfort, substantial energy savings, a good return on investment, and all at the homeowners' fingertips.

Ata Touch is behind this home's fully ducted room by room heating or cooling and energy saving water heating for 2 hot water cylinders, which is all from just one heat pump. There is even provision for hydronic underfloor heating using that same heat pump. This world-first technology has individual room/zone controls that monitor the temperature in each room/zone and, depending on the comfort levels set by the occupants, adjusts automatically to meet those settings and schedules whilst managing energy efficiency. The home is simply controlled by a discrete touch screen that allows for on and off functionality, scheduling and monitoring, all to enhance the comfort, power savings and lifestyle of the family. The Ata Mobile app runs on smartphones and tablets/iPads and gives the same controls as the touch screen from anywhere in the world with internet access.

CONTACT

for more information and pricing



Phone: 07 595 0600



Email: sales@atatouch.co.nz



**Showroom: 27 The Boulevard, Te Rapa,
Hamilton**



**Web Site:
www.atatouch.co.nz**



Scan the QR code to watch an informative video or visit:
www.atatouch.co.nz/video/

